

TIME & SPACE



*We invite  
you to  
Experience  
divine reality.*

Eternity can be a fleeting moment,  
While now lives forever.

Within the tiny heart is the deepest space,  
Where relationships replace the  
void of emptiness.

Let each action be worthy,  
each word be a bond.

We are travelers till we meet again  
tomorrow, for Time is to eternity,  
as Space is to divine.





A portrait of John Sullivan, a British Raj official, shown from the chest up. He is wearing a dark suit jacket over a white shirt and a dark cravat. The background is a dark, textured red. The portrait is slightly out of focus, with the subject's face being the sharpest part.

**John Sullivan** 1788-1860  
Fountain of Modern Mysore

Almost two centuries have passed since John Sullivan, the British Raj official, gushed over Ooty, saying how, "it resembles Switzerland, more than any country of Europe...the hills beautifully wooded and fine strong spring with running water in every valley." A brochure writer in 2014 wouldn't have to change a comma in this description.



If Ooty is the crown jewel of the Nilgiris then getting there is no less an experience: The Nilgiri Mountain Railway -- that runs on a rack and pinion track and connects Mettupalayam to Ooty in little over an hour – is a UNESCO world heritage property. The Blue Mountain Train’s exhilarating journey past hair-raising curves, rocky mountain tunnels, gurgling streams and sprawling tea gardens as it takes you to Ooty provides the perfect prelude to what is in store. Once you disembark, Elysium awaits – a villa in Emeraldshire. It can’t get any better.

*Emeraldshire*

**TIME & SPACE**  
GROUP

EXPERIENCE DIVINE REALTY



*Emeraldshire*

East of Eden



TIME & SPACE

# *Emeraldshire*

## East of Eden

While time is of the essence, space makes it tangible. When the two mesh harmoniously they provide that elusive third dimension, which is what we at Time & Space Group, the Bangalore-based designers of idyllic living, strive for.

Our latest offering, Emeraldshire, situated on the banks of the picturesque Emerald Lake in the Nilgiris, is an architectural masterpiece. The Eden-like ambience of this project, of course, comes with all the safety and security of a gated community.

Set up on 54 acres of pristine property, Emeraldshire Villa Enclave overlooks the majestic and serene Emerald Lake. Residing there is like reposing in the lap of nature, an experience conducive to genuine relaxation and rejuvenation of both body and soul. The ultra-modern amenities are so designed as to mesh unobtrusively with the natural environment, always there for the asking but never conspicuous.

*Emeraldshire*

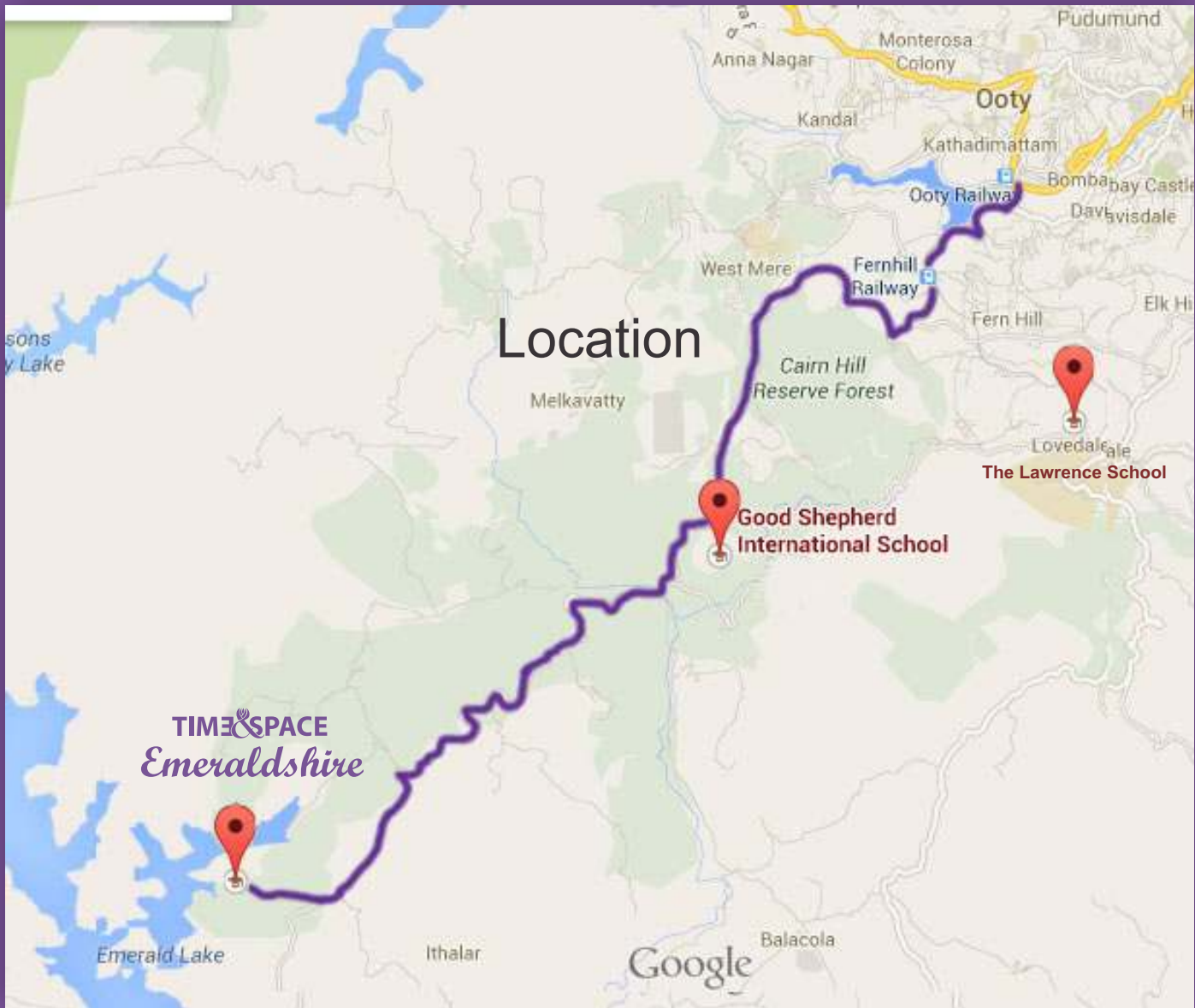
Good Shepherd International School,  
Ooty



The Lawrence School, Lovedale  
Ooty







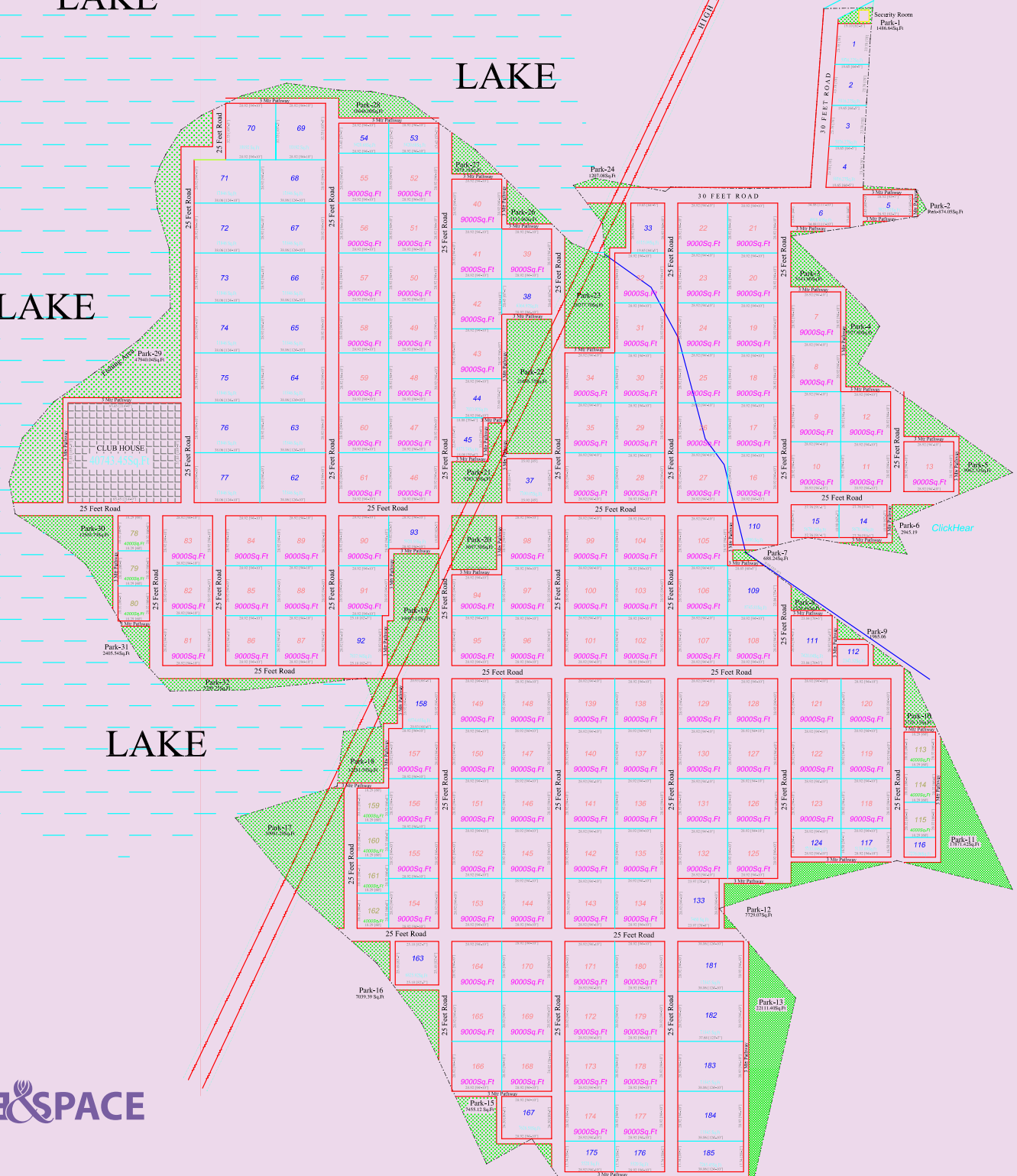
Emeraldshire

LAKE

LAKE

LAKE

LAKE



## PROJECT DETAILS

Project Name  
Emeraldshire

Type of Development  
Villas / Villa Plots

Location  
7350 feet Above Sea level, Ithalar, Ooty.  
Facing Emerald Lake

Land Area / No. of Units  
54 Acres (Phase I + II+III) / 185 Villas

Structure  
1500 Sq. Ft. Ground level

Plot Size  
9000 Sq. Ft.

### Proximity

5 minutes Drive from Good Shepherd International School,  
7 minutes from Lawrence School,  
10 minutes from Ooty Railway Station

### Amenities

Gymnasium, Spa & Salon, Squash Court, Table Tennis, Indoor Badminton  
Court Library / Reading Room, Party Hall, Children's Play Area  
Golf Putting Green, Mini warm water swimming pool, Fire Place  
Fishing Place, Tea Garden, Rose Garden



CLUB HOUSE FACILITIES



CONFERENCE ROOM



LOUNGE



GUEST ROOM



CYCLE PATH



MULTIPURPOSE HALL



LIBRARY



VOLLEY BALL



CARDS ROOM



TENNIS

CLUB HOUSE FACILITIES



BILLIARDS



BAR



GYMNASIUM



SWIMMING POOL



BADMINTON



SPA



FINE DINING RESTAURANT



CHILDREN'S PLAY AREA



PUTTING GREEN

*Emeraldshire*

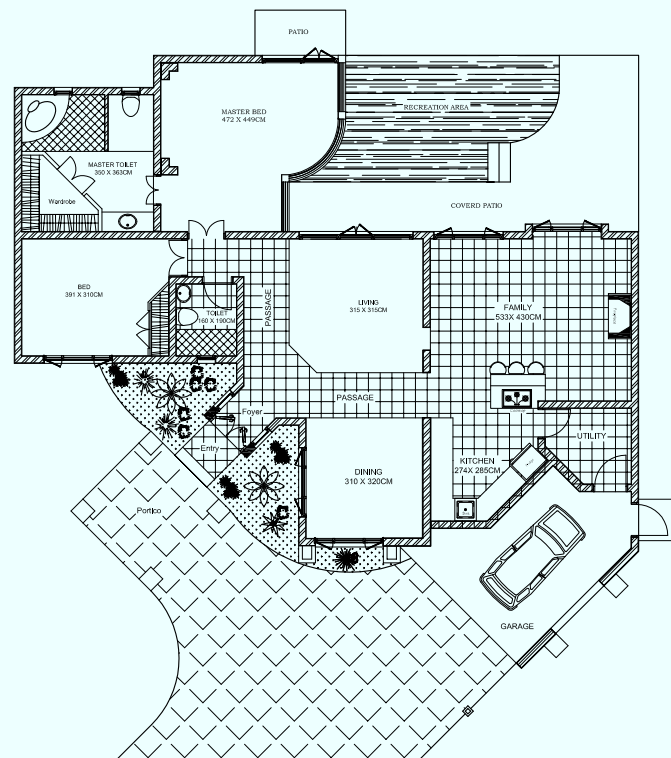


**Villa No: 01**

Bedroom: 2 No

Living Area: 1452Sqft

Porch Area: 182 Sqft







VILLA-2

**Villa No: 02**

Bedroom: 2 No  
Living Area: 1500 Sqft  
Porch Area: 172 Sqft





**TIME & SPACE**  
GROUP

EXPERIENCE DIVINE REALTY

289, 15th main, RMV Extension,  
Bangalore - 560 080

Sudhakar Babu  
M : +91 7022015445 / 9900451515  
P : +91 80 41499999  
E : [sudhakarbabu@timeandspacegroup.com](mailto:sudhakarbabu@timeandspacegroup.com)  
W : [www.timeandspacegroup.com](http://www.timeandspacegroup.com)